
Title: **Informative Annex describing the noise profiles**

Project: **SDSL**

Source: **Adtran AG, Ascom , FTW, Alcatel KE**

Contact: Marc Kimpe Angus Carrick
Adtran AG. Ascom Transmission Ltd.
Stelzenstrasse 6. Schwarzenburgstrasse 73,
8152 Zürich/Switzerland CH-3097 Liebefeld
voice: +1 256 963 8263 Angus.Carrick@ascom.ch
fax: +1 256 963 2386
marc.kimpe@adtran.com

Tomas Nordström Ludger Dreier
FTW Alcatel KE
Donau-City-Strasse 1/3 Wohlenbergstr. 3, Dept. RD12
AT-1220 Wien, Austria D-30179 Hannover
Voice: +43 1 5052830-22 voice: +49 511 67 47-488
Fax: +43 1 5052830-99 fax: +49 511 67 47-357
Tomas.Nordstrom@ftw.at ludger.dreier@alcatel.de

Status: For Discussion and Approval.

ABSTRACT

This contribution tabulates the noise profile values for all of the possible 280 test cases of test sets 1 to 7. It is proposed that the annex be included in the next revision of SDSL.

NOTICE

This contribution has been prepared to assist ETSI TM6. This document is offered to the committee as a basis for discussion and is not a binding proposal on the authors. The requirements are subject to change in form and numerical values after further study. The authors specifically, reserve the right to add to, or amend, the statements contained herein.

1. Introduction

Table 12-1 of TS 101 524 lists the test sequence for performance testing. The total number of possible noise shapes is 140 each for the NT and LT. Since some of the test will only be applied to the highest and lowest rates, a subset of those 280 test cases will actually be used. Table 1 breaks down the number of noise shapes per test and transceiver type for each side (LT and NT). The estimated time required to pass 10^9 bits is also indicated. For the single rate case, minimum and maximum values are shown (7 minutes for 2304kbps and 43 min for 384kbps).

Table 1. Number of tests and time to execute them for modems supporting various options.

Test Set	Total number of possible tests	Subset used for a modem supporting symmetric PSDs	Subset used for a modem supporting sym. and asym. PSDs	Subset used for a modem supporting one of the rates of Table 12-2 or 12-3.
1	10	2 (50 min)	4 (65 min)	1 (7/43 min)
2	30	24 (456min)	30 (501 min)	3 (21/129 min)
3	10	2 (50 min)	4 (65 min)	1 (7/43 min)
4	20	4 (100min)	8 (130 min)	2 (14/86 min)
5	10	2 (50min)	4 (65 min)	1 (7/43 min)
6	20	4 (100min)	8 (130 min)	2 (14/86 min)
7	40	8 (200min)	16 (260 min)	4 (28/192 min)
Total	140	46 (1005min=16.75hours)	74 (1216min=20.25hours)	14 (98/622min=1.5/10hours)

Depending on the results of the first 7 test sets, additional tests need to be performed in test set 9 and 10. We do not list the noise shapes associated with those test sets.

It is assumed that the noise shapes used for test #1 will be identical to Noise A of test #2

TD14

021t14

Noise Profile Nomenclature: ABBBCDE

A: Side (either C or R)

BBB: Rate

C: PSD type (either s for symmetric or a for asymmetric)

D: Noise Type (A ,B, C or D)

E: Loop Number (from 1 to 7)

LT Side/ Symmetric PSDs

Noise Profile	Magnitude of the noise in dBm per Hz (sign is always negative) as a function of frequency in kHz																		
	1	10	20	30	40	50	60	70	80	90	100	150	200	250	300	350	400	600	800
C384sA2	114.9	99.2	95.0	93.1	92.5	92.3	92.9	93.9	93.4	92.7	92.0	88.1	86.3	85.0	83.8	82.9	82.1	79.4	77.6
C384sC2	120.6	104.6	100.4	98.4	97.7	97.6	98.7	101.8	102.6	102.0	101.3	94.5	92.7	91.4	90.2	89.3	88.5	87.8	86.8
C384sD2	131.8	104.4	99.5	97.1	95.8	95.3	96.4	100.5	107.0	114.2	121.6	138.0	138.0	138.0	138.0	138.0	138.0	138.0	138.0
C512sA2	114.9	99.4	95.3	93.4	92.8	92.3	92.0	91.9	92.0	92.2	91.9	88.1	86.3	85.0	83.8	82.9	82.1	79.4	77.6
C512sC2	120.6	104.9	100.8	98.8	98.1	97.7	97.4	97.5	98.3	100.0	100.9	94.5	92.7	91.4	90.2	89.3	88.5	87.8	86.8
C512sD2	132.8	105.6	100.6	98.0	96.4	95.4	94.8	94.8	95.8	98.7	103.2	131.4	138.0	138.0	138.0	138.0	138.0	138.0	138.0
C768sA2	114.9	99.6	95.6	93.7	93.3	92.8	92.4	91.9	91.2	90.7	90.3	88.1	86.3	84.9	83.8	82.9	82.1	79.4	77.6
C768sC2	120.6	105.2	101.2	99.3	98.8	98.4	98.0	97.5	97.0	96.6	96.4	94.4	92.7	91.4	90.2	89.3	88.5	87.8	86.8
C768sD2	134.2	107.3	102.2	99.5	97.7	96.5	95.5	94.8	94.3	93.9	93.8	102.6	120.9	138.0	138.0	138.0	138.0	138.0	138.0
C1024sA2	114.9	99.7	95.7	93.9	93.6	93.2	92.8	92.3	91.5	90.8	90.3	87.5	86.3	84.9	83.8	82.9	82.1	79.4	77.6
C1024sC2	120.6	105.3	101.4	99.6	99.2	99.0	98.7	98.2	97.5	96.9	96.4	93.5	92.7	91.4	90.2	89.3	88.5	87.8	86.8
C1024sD2	135.0	108.5	103.3	100.6	98.8	97.5	96.4	95.5	94.9	94.3	93.9	93.6	102.1	115.8	130.8	138.0	138.0	138.0	138.0
C1280sA2	114.9	99.7	95.8	93.9	93.8	93.5	93.1	92.6	91.8	91.1	90.4	87.3	86.0	84.9	83.8	82.9	82.1	79.4	77.6
C1280sC2	120.6	105.4	101.5	99.7	99.5	99.4	99.3	98.8	98.0	97.4	96.8	93.2	92.2	91.3	90.2	89.3	88.5	87.8	86.8

TD14

021t14

C1280sD2	135.7	109.4	104.3	101.5	99.7	98.3	97.2	96.3	95.5	94.9	94.4	92.8	94.0	101.7	112.6	124.2	136.9	138.0	138.0
C1536sA2	115.0	99.7	95.8	94.0	93.8	93.6	93.3	92.8	92.0	91.2	90.6	87.3	85.8	84.7	83.8	82.9	82.1	79.4	77.6
C1536sC2	120.6	105.4	101.5	99.8	99.6	99.7	99.7	99.3	98.5	97.8	97.2	93.3	91.9	91.1	90.2	89.3	88.5	87.8	86.8
C1536sD2	136.1	110.2	105.0	102.3	100.4	99.0	97.9	96.9	96.1	95.5	94.9	92.9	92.3	94.4	101.4	110.4	119.9	138.0	138.0
C2048sA2	115.0	99.7	95.7	93.9	93.8	93.6	93.3	92.8	91.9	91.2	90.5	87.2	85.5	84.3	83.5	82.8	82.1	79.4	77.6
C2048sC2	120.6	105.4	101.5	99.8	99.6	99.7	99.7	99.4	98.5	97.8	97.2	93.1	91.6	90.4	89.7	89.2	88.5	87.8	86.8
C2048sD2	136.3	110.4	105.2	102.5	100.6	99.1	98.0	97.0	96.2	95.5	94.8	92.6	91.3	90.7	91.2	94.1	99.8	128.9	138.0
C2304sA2	115.0	99.7	95.8	94.0	93.8	93.6	93.4	92.9	92.0	91.2	90.6	87.2	85.5	84.3	83.4	82.7	82.0	79.4	77.6
C2304sC2	120.6	105.4	101.5	99.8	99.7	99.9	100.0	99.7	98.8	98.1	97.4	93.2	91.6	90.4	89.5	88.9	88.4	87.8	86.8
C2304sD2	136.6	110.9	105.7	102.9	101.0	99.6	98.4	97.4	96.6	95.9	95.3	92.9	91.5	90.7	90.4	91.3	94.4	118.1	138.0
C384sD3	131.8	104.4	99.5	97.1	95.8	95.3	96.4	100.5	107.0	114.2	121.6	138.0	138.0	138.0	138.0	138.0	138.0	138.0	138.0
C512sD3	132.8	105.6	100.6	98.0	96.4	95.4	94.8	94.8	95.8	98.7	103.2	131.4	138.0	138.0	138.0	138.0	138.0	138.0	138.0
C768sD3	134.1	107.3	102.2	99.5	97.7	96.5	95.5	94.8	94.3	93.9	93.8	102.6	120.9	138.0	138.0	138.0	138.0	138.0	138.0
C1024sD3	135.0	108.5	103.3	100.6	98.8	97.4	96.4	95.5	94.8	94.3	93.9	93.6	102.1	115.8	130.8	138.0	138.0	138.0	138.0
C1280sD3	135.6	109.4	104.2	101.5	99.7	98.3	97.2	96.2	95.5	94.9	94.3	92.8	94.0	101.7	112.6	124.2	136.9	138.0	138.0
C1536sD3	136.1	110.1	105.0	102.3	100.4	99.0	97.8	96.9	96.1	95.4	94.8	92.9	92.3	94.4	101.4	110.4	119.9	138.0	138.0
C2048sD3	136.3	110.3	105.2	102.4	100.5	99.1	97.9	96.9	96.1	95.4	94.8	92.6	91.3	90.7	91.2	94.1	99.8	128.9	138.0
C2304sD3	136.6	110.8	105.6	102.9	101.0	99.5	98.3	97.4	96.5	95.8	95.2	92.9	91.5	90.7	90.4	91.3	94.4	118.1	138.0
C384sA4	114.9	99.2	95.0	93.1	92.5	92.3	92.9	93.9	93.4	92.7	92.0	88.1	86.3	85.0	83.8	82.9	82.1	79.4	77.6
C384sC4	120.6	104.6	100.4	98.4	97.7	97.6	98.7	101.8	102.6	102.0	101.3	94.5	92.7	91.4	90.2	89.3	88.5	87.8	86.8
C512sA4	114.9	99.4	95.3	93.4	92.8	92.3	92.0	91.9	92.0	92.2	91.9	88.1	86.3	85.0	83.8	82.9	82.1	79.4	77.6
C512sC4	120.6	104.9	100.8	98.8	98.1	97.7	97.4	97.5	98.3	100.0	100.9	94.5	92.7	91.4	90.2	89.3	88.5	87.8	86.8
C768sA4	114.9	99.5	95.6	93.7	93.3	92.8	92.4	91.8	91.2	90.6	90.3	88.0	86.3	84.9	83.8	82.9	82.1	79.4	77.6

TD14

021t14

C768sC4	120.6	105.2	101.2	99.3	98.7	98.4	98.0	97.5	97.0	96.6	96.4	94.4	92.7	91.4	90.2	89.3	88.5	87.8	86.8
C1024sA4	114.9	99.6	95.7	93.8	93.6	93.2	92.8	92.2	91.5	90.8	90.2	87.5	86.3	84.9	83.8	82.9	82.1	79.4	77.6
C1024sC4	120.6	105.3	101.4	99.6	99.2	99.0	98.7	98.2	97.5	96.9	96.4	93.5	92.7	91.4	90.2	89.3	88.5	87.8	86.8
C1280sA4	114.9	99.6	95.7	93.9	93.7	93.4	93.1	92.5	91.7	91.0	90.4	87.3	86.0	84.9	83.8	82.9	82.1	79.4	77.6
C1280sC4	120.6	105.3	101.5	99.7	99.4	99.4	99.2	98.8	98.0	97.3	96.8	93.2	92.2	91.3	90.2	89.3	88.5	87.8	86.8
C1536sA4	114.9	99.6	95.7	93.9	93.8	93.5	93.2	92.7	91.9	91.2	90.5	87.3	85.8	84.7	83.8	82.9	82.1	79.4	77.6
C1536sC4	120.6	105.3	101.5	99.8	99.6	99.7	99.7	99.3	98.5	97.8	97.2	93.3	91.9	91.1	90.2	89.3	88.5	87.8	86.8
C2048sA4	115.0	99.6	95.6	93.9	93.7	93.5	93.2	92.6	91.8	91.0	90.4	87.1	85.5	84.3	83.5	82.8	82.1	79.4	77.6
C2048sC4	120.6	105.3	101.4	99.7	99.6	99.7	99.7	99.3	98.4	97.7	97.1	93.1	91.5	90.4	89.7	89.2	88.5	87.8	86.8
C2304sA4	115.0	99.6	95.6	93.9	93.7	93.5	93.2	92.7	91.8	91.1	90.4	87.1	85.4	84.2	83.4	82.7	82.0	79.4	77.6
C2304sC4	120.6	105.3	101.4	99.7	99.6	99.8	99.9	99.5	98.7	98.0	97.3	93.2	91.6	90.4	89.5	88.9	88.4	87.8	86.8
C384sB5	120.4	104.6	100.3	98.4	97.7	97.6	98.7	101.7	102.6	102.0	101.3	94.5	92.7	91.4	90.2	89.3	88.5	87.8	86.9
C512sB5	120.4	104.9	100.7	98.8	98.0	97.6	97.4	97.5	98.3	100.0	100.9	94.5	92.7	91.4	90.2	89.3	88.5	87.8	86.9
C768sB5	120.4	105.1	101.1	99.2	98.6	98.3	97.9	97.4	96.9	96.5	96.3	94.4	92.7	91.4	90.2	89.3	88.5	87.8	86.9
C1024sB5	120.4	105.2	101.2	99.4	99.0	98.8	98.5	98.0	97.4	96.8	96.3	93.5	92.7	91.4	90.2	89.3	88.5	87.8	86.9
C1280sB5	120.4	105.2	101.3	99.5	99.2	99.1	99.0	98.6	97.8	97.2	96.7	93.2	92.2	91.3	90.2	89.3	88.5	87.8	86.9
C1536sB5	120.4	105.1	101.2	99.5	99.3	99.3	99.3	98.9	98.2	97.5	97.0	93.2	91.9	91.1	90.2	89.3	88.5	87.8	86.9
C2048sB5	120.4	105.0	101.1	99.3	99.1	99.1	99.1	98.7	97.9	97.3	96.7	93.0	91.5	90.4	89.7	89.2	88.5	87.8	86.9
C2304sB5	120.5	104.9	101.0	99.2	99.0	99.1	99.1	98.8	98.1	97.4	96.8	93.0	91.5	90.4	89.5	88.9	88.4	87.8	86.9
C384sA6	114.9	99.2	95.0	93.1	92.5	92.3	92.9	93.9	93.4	92.7	92.0	88.1	86.3	85.0	83.8	82.9	82.1	79.4	77.6
C384sC6	120.6	104.6	100.4	98.4	97.7	97.6	98.7	101.8	102.6	102.0	101.3	94.5	92.7	91.4	90.2	89.3	88.5	87.8	86.8
C512sA6	114.9	99.4	95.3	93.4	92.8	92.3	92.0	91.9	92.0	92.2	91.9	88.1	86.3	85.0	83.8	82.9	82.1	79.4	77.6
C512sC6	120.6	104.9	100.8	98.8	98.1	97.7	97.4	97.5	98.3	100.0	100.9	94.5	92.7	91.4	90.2	89.3	88.5	87.8	86.8

TD14

021t14

C768sA6	114.9	99.6	95.6	93.7	93.3	92.9	92.4	91.9	91.2	90.7	90.3	88.0	86.3	84.9	83.8	82.9	82.1	79.4	77.6
C768sC6	120.6	105.2	101.2	99.3	98.8	98.4	98.0	97.5	97.0	96.6	96.4	94.4	92.7	91.4	90.2	89.3	88.5	87.8	86.8
C1024sA6	115.0	99.7	95.7	93.9	93.6	93.2	92.8	92.3	91.5	90.9	90.3	87.5	86.3	84.9	83.8	82.9	82.1	79.4	77.6
C1024sC6	120.6	105.3	101.4	99.6	99.2	99.0	98.7	98.2	97.5	96.9	96.4	93.5	92.7	91.4	90.2	89.3	88.5	87.8	86.8
C1280sA6	115.0	99.7	95.8	94.0	93.8	93.5	93.2	92.7	91.9	91.2	90.5	87.3	86.0	84.9	83.8	82.9	82.1	79.4	77.6
C1280sC6	120.6	105.4	101.5	99.7	99.5	99.4	99.3	98.8	98.1	97.4	96.8	93.2	92.2	91.3	90.2	89.3	88.5	87.8	86.8
C1536sA6	115.1	99.8	95.8	94.0	93.9	93.7	93.4	92.9	92.1	91.4	90.7	87.3	85.7	84.8	83.8	82.9	82.1	79.4	77.6
C1536sC6	120.6	105.4	101.5	99.8	99.6	99.8	99.8	99.4	98.6	97.9	97.3	93.3	91.9	91.1	90.2	89.3	88.5	87.8	86.8
C2048sA6	115.4	100.0	95.9	94.0	93.9	93.7	93.4	93.0	92.1	91.4	90.7	87.2	85.5	84.4	83.5	82.8	82.1	79.4	77.6
C2048sC6	120.7	105.4	101.5	99.8	99.7	99.8	99.8	99.5	98.6	97.9	97.3	93.1	91.5	90.4	89.7	89.2	88.5	87.8	86.8
C2304sA6	115.6	100.2	96.0	94.1	94.0	93.8	93.6	93.1	92.3	91.5	90.9	87.3	85.5	84.4	83.4	82.7	82.0	79.4	77.6
C2304sC6	120.7	105.4	101.5	99.8	99.7	100.0	100.1	99.8	99.0	98.3	97.6	93.2	91.6	90.4	89.6	88.9	88.4	87.8	86.8
C384sA7	114.9	99.2	95.0	93.1	92.5	92.3	92.9	93.9	93.4	92.7	92.0	88.1	86.3	85.0	83.8	82.9	82.1	79.4	77.6
C384sB7	120.6	104.6	100.4	98.4	97.7	97.6	98.7	101.8	102.6	102.0	101.3	94.5	92.7	91.4	90.2	89.3	88.5	87.8	86.9
C384sC7	120.6	104.6	100.4	98.4	97.7	97.6	98.7	101.8	102.6	102.0	101.3	94.5	92.7	91.4	90.2	89.3	88.5	87.8	86.8
C384sD7	131.8	104.4	99.5	97.1	95.8	95.3	96.4	100.5	107.0	114.2	121.6	138.0	138.0	138.0	138.0	138.0	138.0	138.0	138.0
C512sA7	114.9	99.4	95.3	93.4	92.8	92.3	92.0	91.9	92.0	92.2	91.9	88.1	86.3	85.0	83.8	82.9	82.1	79.4	77.6
C512sB7	120.6	104.9	100.8	98.8	98.1	97.7	97.4	97.5	98.3	100.0	100.9	94.5	92.7	91.4	90.2	89.3	88.5	87.8	86.9
C512sC7	120.6	104.9	100.8	98.8	98.1	97.7	97.4	97.5	98.3	100.0	100.9	94.5	92.7	91.4	90.2	89.3	88.5	87.8	86.8
C512sD7	132.8	105.6	100.6	98.0	96.4	95.4	94.8	94.8	95.8	98.7	103.2	131.4	138.0	138.0	138.0	138.0	138.0	138.0	138.0
C768sA7	114.9	99.5	95.6	93.7	93.3	92.8	92.4	91.8	91.2	90.7	90.3	88.1	86.3	84.9	83.8	82.9	82.1	79.4	77.6
C768sB7	120.6	105.2	101.2	99.3	98.7	98.4	98.0	97.5	97.0	96.6	96.4	94.4	92.7	91.4	90.2	89.3	88.5	87.8	86.9
C768sC7	120.6	105.2	101.2	99.3	98.7	98.4	98.0	97.5	97.0	96.6	96.4	94.4	92.7	91.4	90.2	89.3	88.5	87.8	86.8

TD14

021t14

C768sD7	134.1	107.2	102.1	99.5	97.7	96.5	95.5	94.8	94.3	93.9	93.8	102.6	120.9	138.0	138.0	138.0	138.0	138.0	138.0
C1024sA7	114.9	99.6	95.7	93.8	93.6	93.2	92.8	92.2	91.5	90.8	90.3	87.5	86.3	84.9	83.8	82.9	82.1	79.4	77.6
C1024sB7	120.6	105.3	101.4	99.6	99.2	99.0	98.7	98.2	97.5	96.9	96.4	93.5	92.7	91.4	90.2	89.3	88.5	87.8	86.9
C1024sC7	120.6	105.3	101.4	99.6	99.2	99.0	98.7	98.2	97.5	96.9	96.4	93.5	92.7	91.4	90.2	89.3	88.5	87.8	86.8
C1024sD7	135.0	108.4	103.3	100.6	98.8	97.4	96.4	95.5	94.9	94.3	93.9	93.6	102.1	115.8	130.8	138.0	138.0	138.0	138.0
C1280sA7	114.9	99.6	95.7	93.9	93.7	93.4	93.1	92.6	91.8	91.1	90.4	87.3	86.0	84.9	83.8	82.9	82.1	79.4	77.6
C1280sB7	120.6	105.3	101.5	99.7	99.4	99.4	99.2	98.8	98.0	97.4	96.8	93.2	92.2	91.3	90.2	89.3	88.5	87.8	86.9
C1280sC7	120.6	105.3	101.5	99.7	99.4	99.4	99.2	98.8	98.0	97.4	96.8	93.2	92.2	91.3	90.2	89.3	88.5	87.8	86.8
C1280sD7	135.7	109.4	104.2	101.5	99.7	98.3	97.2	96.3	95.5	94.9	94.3	92.8	94.0	101.7	112.6	124.2	136.9	138.0	138.0
C1536sA7	115.0	99.7	95.7	93.9	93.8	93.6	93.3	92.8	91.9	91.2	90.6	87.3	85.8	84.8	83.8	82.9	82.1	79.4	77.6
C1536sB7	120.6	105.3	101.5	99.8	99.6	99.7	99.7	99.3	98.5	97.8	97.2	93.3	91.9	91.1	90.2	89.3	88.5	87.8	86.9
C1536sC7	120.6	105.3	101.5	99.8	99.6	99.7	99.7	99.3	98.5	97.8	97.2	93.3	91.9	91.1	90.2	89.3	88.5	87.8	86.8
C1536sD7	136.1	110.1	105.0	102.2	100.4	99.0	97.8	96.9	96.1	95.5	94.9	92.9	92.3	94.4	101.4	110.4	119.9	138.0	138.0
C2048sA7	115.0	99.7	95.7	93.9	93.7	93.5	93.2	92.7	91.9	91.2	90.5	87.2	85.5	84.4	83.5	82.8	82.1	79.4	77.6
C2048sB7	120.6	105.3	101.4	99.7	99.6	99.7	99.7	99.3	98.5	97.8	97.2	93.1	91.6	90.4	89.7	89.2	88.5	87.8	86.9
C2048sC7	120.6	105.3	101.4	99.7	99.6	99.7	99.7	99.3	98.5	97.8	97.2	93.1	91.6	90.4	89.7	89.2	88.5	87.8	86.8
C2048sD7	136.3	110.3	105.1	102.4	100.5	99.1	98.0	97.0	96.2	95.5	94.8	92.6	91.3	90.7	91.2	94.1	99.8	128.9	138.0
C2304sA7	115.1	99.7	95.7	93.9	93.8	93.6	93.3	92.8	92.0	91.2	90.6	87.2	85.5	84.3	83.4	82.7	82.0	79.4	77.6
C2304sB7	120.6	105.3	101.4	99.7	99.6	99.8	99.9	99.6	98.8	98.1	97.4	93.2	91.6	90.4	89.6	88.9	88.4	87.8	86.9
C2304sC7	120.6	105.3	101.4	99.7	99.6	99.8	99.9	99.6	98.8	98.1	97.4	93.2	91.6	90.4	89.6	88.9	88.4	87.8	86.8
C2304sD7	136.6	110.8	105.6	102.9	101.0	99.5	98.4	97.4	96.6	95.9	95.3	92.9	91.5	90.7	90.4	91.3	94.4	118.1	138.0

TD14

021t14

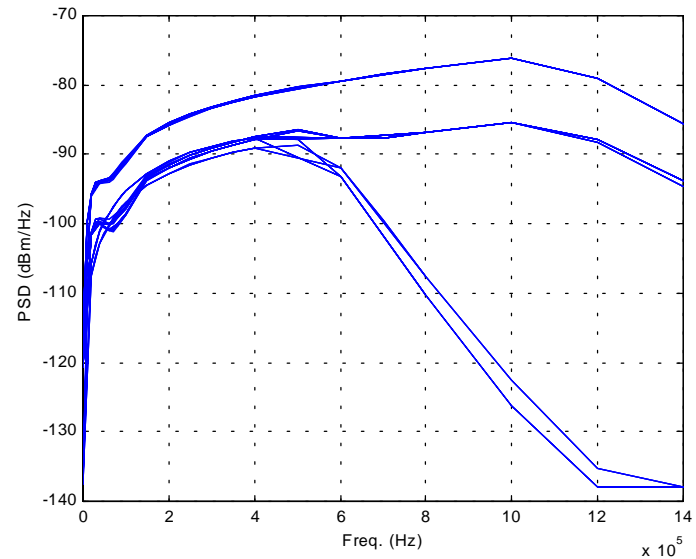
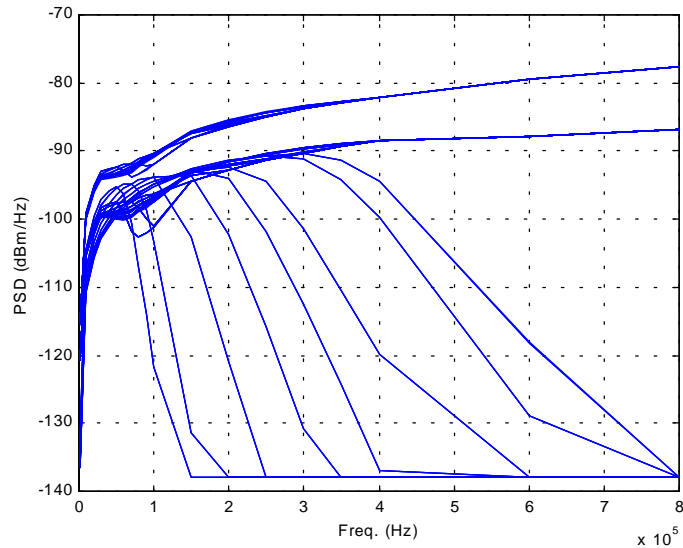
LT Side/ Asymmetric PSDs

Noise Profile	Magnitude of the noise in dBm per Hz (sign is always negative) as a function of frequency in kHz																		
	1	20	40	60	80	100	150	200	250	300	350	400	500	600	700	800	1000	1200	1400
C2048aA2	115.0	95.8	93.9	93.5	92.1	90.7	87.2	85.5	84.2	83.2	82.3	81.5	80.3	79.4	78.4	77.6	76.1	79.0	85.6
C2048aC2	120.6	101.6	99.8	100.1	99.0	97.5	93.2	91.5	90.2	89.1	88.2	87.5	86.5	87.7	87.6	86.8	85.3	87.9	93.8
C2048aD2	136.6	105.8	101.2	98.6	96.7	95.3	92.8	91.0	89.8	88.8	88.1	87.6	87.9	93.1	101.7	110.3	126.3	138.0	138.0
C2304aA2	115.0	95.8	94.0	93.8	92.5	91.1	87.5	85.7	84.4	83.4	82.5	81.8	80.4	79.4	78.4	77.6	76.1	79.0	85.6
C2304aC2	120.6	101.6	100.0	100.9	100.1	98.7	93.7	92.0	90.6	89.6	88.7	87.9	86.6	87.6	87.6	86.8	85.3	87.9	93.8
C2304aD2	137.5	107.5	102.9	100.3	98.5	97.0	94.5	92.8	91.5	90.5	89.7	89.1	88.7	92.0	99.6	107.6	122.5	135.2	138.0
C2048aD3	136.6	105.7	101.1	98.5	96.6	95.2	92.7	91.0	89.8	88.8	88.1	87.6	87.9	93.1	101.7	110.3	126.3	138.0	138.0
C2304aD3	137.5	107.4	102.8	100.2	98.3	96.9	94.4	92.7	91.5	90.5	89.7	89.1	88.7	92.0	99.6	107.6	122.5	135.2	138.0
C2048aA4	114.9	95.7	93.8	93.4	92.0	90.6	87.2	85.5	84.2	83.2	82.3	81.5	80.3	79.4	78.4	77.6	76.1	79.0	85.6
C2048aC4	120.6	101.5	99.7	100.0	98.8	97.4	93.2	91.5	90.1	89.1	88.2	87.5	86.5	87.7	87.6	86.8	85.3	87.9	93.8
C2304aA4	115.0	95.7	93.9	93.6	92.3	90.9	87.4	85.7	84.4	83.4	82.5	81.8	80.4	79.4	78.4	77.6	76.1	79.0	85.6
C2304aC4	120.6	101.5	99.9	100.8	99.9	98.5	93.7	92.0	90.6	89.6	88.7	87.9	86.6	87.6	87.6	86.8	85.3	87.9	93.8
C2048aB5	120.4	101.1	99.2	99.3	98.2	97.0	93.1	91.4	90.1	89.1	88.2	87.5	86.5	87.7	87.7	86.9	85.4	88.2	94.5
C2304aB5	120.4	101.1	99.3	99.9	99.1	97.9	93.5	91.9	90.6	89.5	88.7	87.9	86.6	87.6	87.7	86.9	85.4	88.2	94.5
C2048aA6	115.2	95.8	94.0	93.6	92.3	90.9	87.3	85.5	84.2	83.2	82.3	81.5	80.3	79.4	78.4	77.6	76.1	79.0	85.6
C2048aC6	120.6	101.6	99.8	100.2	99.1	97.6	93.2	91.5	90.2	89.1	88.2	87.5	86.5	87.7	87.6	86.8	85.3	87.9	93.8
C2304aA6	115.4	96.0	94.1	94.0	92.8	91.3	87.5	85.7	84.5	83.4	82.5	81.8	80.4	79.4	78.4	77.6	76.1	79.0	85.6
C2304aC6	120.7	101.6	100.0	101.1	100.3	98.8	93.7	92.0	90.6	89.6	88.7	87.9	86.6	87.6	87.6	86.8	85.3	87.9	93.8
C2048aA7	115.0	95.7	93.8	93.4	92.1	90.7	87.2	85.5	84.2	83.2	82.3	81.5	80.3	79.4	78.4	77.6	76.1	79.0	85.6
C2048aB7	120.6	101.5	99.7	100.1	98.9	97.5	93.2	91.5	90.2	89.1	88.2	87.5	86.5	87.7	87.7	86.9	85.4	88.2	94.5

TD14

021t14

C2048aC7	120.6	101.5	99.7	100.1	98.9	97.5	93.2	91.5	90.2	89.1	88.2	87.5	86.5	87.7	87.6	86.8	85.3	87.9	93.8
C2048aD7	136.6	105.7	101.1	98.5	96.7	95.3	92.7	91.0	89.8	88.8	88.1	87.6	87.9	93.1	101.7	110.3	126.3	138.0	138.0
C2304aA7	115.1	95.8	93.9	93.7	92.4	91.0	87.5	85.7	84.4	83.4	82.5	81.8	80.4	79.4	78.4	77.6	76.1	79.0	85.6
C2304aB7	120.6	101.5	99.9	100.9	100.0	98.6	93.7	92.0	90.6	89.6	88.7	87.9	86.6	87.6	87.7	86.9	85.4	88.2	94.5
C2304aC7	120.6	101.5	99.9	100.9	100.0	98.6	93.7	92.0	90.6	89.6	88.7	87.9	86.6	87.6	87.6	86.8	85.3	87.9	93.8
C2304aD7	137.5	107.4	102.8	100.2	98.4	97.0	94.5	92.7	91.5	90.5	89.7	89.1	88.7	92.0	99.6	107.6	122.5	135.2	138.0



Piecewise Linear Noise PSD for symmetric and asymmetric PSDs on the LT side.

TD14

021t14

NT Side/ Symmetric PSDs

Noise Profile	Magnitude of the noise in dBm per Hz (sign is always negative) as a function of frequency in kHz																		
	1	10	20	30	40	50	60	70	80	90	100	150	200	250	300	350	400	600	800
R384sA2	114.9	99.2	95.3	93.7	92.6	92.1	92.3	92.4	91.8	91.0	90.4	87.9	86.2	84.8	87.3	93.1	98.1	123.1	115.4
R384sC2	120.6	104.6	100.2	98.1	97.3	96.9	97.3	98.2	97.6	96.9	96.2	94.4	93.4	92.1	94.8	99.7	101.5	99.8	96.9
R384sD2	131.8	104.4	99.5	97.1	95.8	95.3	96.4	100.5	107.0	114.2	121.6	138.0	138.0	138.0	138.0	138.0	138.0	138.0	138.0
R512sA2	114.9	99.4	95.7	94.1	92.9	92.1	91.6	91.1	90.9	90.8	90.4	87.9	86.2	84.8	87.3	93.1	98.1	122.5	115.4
R512sC2	120.6	104.9	100.6	98.4	97.6	96.9	96.5	96.3	96.4	96.5	96.1	94.4	93.4	92.1	94.8	99.7	101.5	99.8	96.9
R512sD2	132.8	105.6	100.6	98.0	96.4	95.4	94.8	94.8	95.8	98.7	103.2	131.4	138.0	138.0	138.0	138.0	138.0	138.0	138.0
R768sA2	114.9	99.6	96.0	94.5	93.4	92.6	91.9	91.0	90.4	89.8	89.3	87.9	86.1	84.8	87.3	93.0	98.0	117.7	114.9
R768sC2	120.6	105.2	101.0	98.9	98.1	97.5	96.9	96.3	95.6	95.1	94.7	94.4	93.4	92.1	94.8	99.7	101.5	99.8	96.9
R768sD2	134.2	107.3	102.2	99.5	97.7	96.5	95.5	94.8	94.3	93.9	93.8	102.6	120.9	138.0	138.0	138.0	138.0	138.0	138.0
R1024sA2	114.9	99.7	96.1	94.7	93.7	92.9	92.2	91.3	90.6	89.9	89.3	87.4	86.1	84.8	87.3	93.0	97.8	113.4	113.5
R1024sC2	120.6	105.3	101.2	99.1	98.5	97.9	97.3	96.7	95.9	95.3	94.7	93.5	93.4	92.1	94.8	99.7	101.5	99.8	96.9
R1024sD2	135.0	108.5	103.3	100.6	98.8	97.5	96.4	95.5	94.9	94.3	93.9	93.6	102.1	115.8	130.8	138.0	138.0	138.0	138.0
R1280sA2	114.9	99.7	96.1	94.8	93.9	93.1	92.5	91.6	90.8	90.1	89.5	87.2	85.9	84.7	87.2	92.8	97.4	108.6	110.3
R1280sC2	120.6	105.4	101.3	99.2	98.7	98.2	97.7	97.1	96.2	95.5	94.9	93.2	92.8	92.1	94.8	99.7	101.5	99.8	96.9
R1280sD2	135.7	109.4	104.3	101.5	99.7	98.3	97.2	96.3	95.5	94.9	94.4	92.8	94.0	101.7	112.6	124.2	136.9	138.0	138.0
R1536sA2	115.0	99.7	96.1	94.9	94.0	93.3	92.6	91.7	90.9	90.2	89.6	87.2	85.6	84.6	87.1	92.6	96.8	104.4	106.2
R1536sC2	120.6	105.4	101.3	99.3	98.8	98.3	97.9	97.3	96.5	95.7	95.1	93.3	92.4	91.8	94.7	99.6	101.4	99.8	96.9
R1536sD2	136.1	110.2	105.0	102.3	100.4	99.0	97.9	96.9	96.1	95.5	94.9	92.9	92.3	94.4	101.4	110.4	119.9	138.0	138.0
R2048sA2	115.0	99.7	96.1	94.8	94.0	93.2	92.6	91.7	90.9	90.1	89.5	87.1	85.4	84.2	86.2	90.4	94.7	100.6	102.0
R2048sC2	120.6	105.4	101.3	99.3	98.8	98.3	97.9	97.3	96.5	95.7	95.1	93.1	92.0	91.0	92.6	96.2	100.1	99.7	96.9

TD14

021t14

R2048sD2	136.3	110.4	105.2	102.5	100.6	99.1	98.0	97.0	96.2	95.5	94.8	92.6	91.3	90.7	91.2	94.1	99.8	128.9	138.0
R2304sA2	115.0	99.7	96.1	94.8	94.0	93.3	92.7	91.8	90.9	90.2	89.6	87.1	85.4	84.1	85.8	88.5	91.3	98.0	99.1
R2304sC2	120.6	105.4	101.3	99.3	98.8	98.4	98.0	97.5	96.6	95.9	95.2	93.2	92.0	90.9	92.2	93.9	96.7	99.7	96.8
R2304sD2	136.6	110.9	105.7	102.9	101.0	99.6	98.4	97.4	96.6	95.9	95.3	92.9	91.5	90.7	90.4	91.3	94.4	118.1	138.0
R384sD3	131.8	104.4	99.5	97.1	95.8	95.3	96.4	100.5	107.0	114.2	121.6	138.0	138.0	138.0	138.0	138.0	138.0	138.0	138.0
R512sD3	132.8	105.6	100.6	98.0	96.4	95.4	94.8	94.8	95.8	98.7	103.2	131.4	138.0	138.0	138.0	138.0	138.0	138.0	138.0
R768sD3	134.1	107.3	102.2	99.5	97.7	96.5	95.5	94.8	94.3	93.9	93.8	102.6	120.9	138.0	138.0	138.0	138.0	138.0	138.0
R1024sD3	135.0	108.5	103.3	100.6	98.8	97.4	96.4	95.5	94.8	94.3	93.9	93.6	102.1	115.8	130.8	138.0	138.0	138.0	138.0
R1280sD3	135.6	109.4	104.2	101.5	99.7	98.3	97.2	96.2	95.5	94.9	94.3	92.8	94.0	101.7	112.6	124.2	136.9	138.0	138.0
R1536sD3	136.1	110.1	105.0	102.3	100.4	99.0	97.8	96.9	96.1	95.4	94.8	92.9	92.3	94.4	101.4	110.4	119.9	138.0	138.0
R2048sD3	136.3	110.3	105.2	102.4	100.5	99.1	97.9	96.9	96.1	95.4	94.8	92.6	91.3	90.7	91.2	94.1	99.8	128.9	138.0
R2304sD3	136.6	110.8	105.6	102.9	101.0	99.5	98.3	97.4	96.5	95.8	95.2	92.9	91.5	90.7	90.4	91.3	94.4	118.1	138.0
R384sA4	114.9	99.2	95.3	93.7	92.6	92.1	92.3	92.4	91.8	91.0	90.4	87.9	86.2	84.8	87.3	93.1	98.1	123.1	115.4
R384sC4	120.6	104.6	100.2	98.1	97.3	96.9	97.3	98.2	97.6	96.9	96.2	94.4	93.4	92.1	94.8	99.7	101.5	99.8	96.9
R512sA4	114.9	99.4	95.6	94.0	92.9	92.1	91.6	91.0	90.9	90.8	90.4	87.9	86.2	84.8	87.3	93.1	98.1	122.8	115.4
R512sC4	120.6	104.9	100.6	98.4	97.6	96.9	96.5	96.3	96.4	96.5	96.1	94.4	93.4	92.1	94.8	99.7	101.5	99.8	96.9
R768sA4	114.9	99.5	95.9	94.5	93.4	92.6	91.9	91.0	90.3	89.8	89.3	87.9	86.1	84.8	87.3	93.0	98.0	119.3	115.2
R768sC4	120.6	105.2	101.0	98.9	98.1	97.5	96.9	96.3	95.6	95.1	94.7	94.4	93.4	92.1	94.8	99.7	101.5	99.8	96.9
R1024sA4	114.9	99.6	96.1	94.7	93.7	92.9	92.2	91.3	90.5	89.9	89.3	87.4	86.1	84.8	87.3	93.0	97.9	115.1	114.3
R1024sC4	120.6	105.3	101.2	99.1	98.5	97.9	97.3	96.7	95.9	95.3	94.7	93.5	93.4	92.1	94.8	99.7	101.5	99.8	96.9
R1280sA4	114.9	99.6	96.1	94.8	93.9	93.1	92.4	91.5	90.7	90.0	89.4	87.2	85.9	84.7	87.2	92.9	97.5	110.0	111.6
R1280sC4	120.6	105.3	101.2	99.2	98.7	98.1	97.6	97.0	96.2	95.5	94.9	93.2	92.8	92.1	94.8	99.7	101.5	99.8	96.9
R1536sA4	114.9	99.6	96.1	94.8	93.9	93.2	92.6	91.7	90.8	90.1	89.5	87.2	85.6	84.6	87.1	92.6	96.9	105.5	107.7

TD14

021t14

R1536sC4	120.6	105.3	101.3	99.3	98.8	98.3	97.9	97.3	96.4	95.7	95.1	93.2	92.4	91.8	94.7	99.6	101.4	99.8	96.9
R2048sA4	115.0	99.6	96.0	94.7	93.9	93.1	92.5	91.6	90.8	90.1	89.4	87.0	85.4	84.2	86.1	90.4	94.6	100.8	102.6
R2048sC4	120.6	105.3	101.2	99.2	98.7	98.3	97.9	97.3	96.4	95.7	95.0	93.1	92.0	91.0	92.6	96.2	100.1	99.8	96.9
R2304sA4	115.0	99.6	96.0	94.7	93.9	93.2	92.6	91.7	90.8	90.1	89.5	87.0	85.3	84.1	85.8	88.4	91.2	98.1	99.5
R2304sC4	120.6	105.3	101.2	99.2	98.8	98.4	98.0	97.4	96.6	95.8	95.2	93.2	92.0	90.9	92.1	93.9	96.7	99.7	96.8
R384sB5	120.4	104.6	100.2	98.1	97.3	96.9	97.3	98.2	97.6	96.9	96.2	94.4	93.4	92.1	93.9	98.2	102.0	129.0	121.3
R512sB5	120.4	104.9	100.6	98.4	97.6	96.9	96.5	96.3	96.3	96.5	96.1	94.4	93.4	92.1	93.9	98.2	102.0	129.0	121.3
R768sB5	120.4	105.1	100.9	98.8	98.0	97.4	96.8	96.3	95.6	95.1	94.7	94.4	93.4	92.1	93.9	98.2	102.0	128.7	121.3
R1024sB5	120.4	105.2	101.1	99.0	98.3	97.8	97.2	96.6	95.9	95.2	94.7	93.5	93.4	92.1	93.9	98.2	102.0	128.1	121.3
R1280sB5	120.4	105.2	101.1	99.0	98.5	98.0	97.5	96.9	96.1	95.5	94.8	93.2	92.8	92.1	93.9	98.2	101.9	126.1	121.2
R1536sB5	120.4	105.1	101.1	99.0	98.6	98.1	97.7	97.2	96.3	95.6	95.0	93.2	92.3	91.8	93.8	98.2	101.9	122.8	120.8
R2048sB5	120.4	105.0	100.9	98.9	98.4	98.0	97.6	97.1	96.2	95.5	94.9	93.0	91.9	90.9	92.2	95.7	100.2	115.8	118.4
R2304sB5	120.5	104.9	100.9	98.8	98.4	98.0	97.7	97.2	96.3	95.6	95.0	93.0	91.9	90.9	91.7	93.6	96.7	111.7	115.7
R384sA6	114.9	99.2	95.3	93.7	92.6	92.1	92.3	92.4	91.8	91.0	90.4	87.9	86.2	84.8	87.3	93.1	98.1	122.6	115.4
R384sC6	120.6	104.6	100.2	98.1	97.3	96.9	97.3	98.2	97.6	96.9	96.2	94.4	93.4	92.1	94.8	99.7	101.5	99.8	96.9
R512sA6	114.9	99.4	95.6	94.1	92.9	92.1	91.6	91.1	90.9	90.8	90.4	87.9	86.2	84.8	87.3	93.1	98.0	120.2	115.2
R512sC6	120.6	104.9	100.6	98.4	97.6	96.9	96.5	96.3	96.4	96.5	96.1	94.4	93.4	92.1	94.8	99.7	101.5	99.8	96.9
R768sA6	114.9	99.6	95.9	94.5	93.4	92.6	91.9	91.1	90.4	89.8	89.3	87.9	86.1	84.8	87.3	93.0	97.8	111.7	112.2
R768sC6	120.6	105.2	101.0	98.9	98.1	97.5	96.9	96.3	95.6	95.1	94.7	94.4	93.4	92.1	94.8	99.7	101.5	99.8	96.9
R1024sA6	115.0	99.7	96.1	94.7	93.8	92.9	92.3	91.4	90.6	89.9	89.4	87.4	86.1	84.8	87.3	92.8	97.3	106.6	107.9
R1024sC6	120.6	105.3	101.2	99.1	98.5	97.9	97.3	96.7	96.0	95.3	94.7	93.5	93.4	92.1	94.8	99.7	101.4	99.8	96.9
R1280sA6	115.0	99.7	96.1	94.9	93.9	93.2	92.5	91.6	90.8	90.1	89.5	87.2	85.8	84.7	87.2	92.6	96.7	102.9	103.8
R1280sC6	120.6	105.4	101.2	99.2	98.7	98.2	97.7	97.1	96.3	95.5	94.9	93.2	92.8	92.1	94.8	99.6	101.3	99.8	96.9

TD14

021t14

R1536sA6	115.1	99.8	96.2	94.9	94.1	93.3	92.7	91.8	91.0	90.3	89.6	87.2	85.6	84.6	87.2	92.2	95.8	99.6	100.5
R1536sC6	120.6	105.4	101.3	99.3	98.8	98.4	97.9	97.3	96.5	95.8	95.1	93.2	92.3	91.8	94.7	99.5	101.2	99.7	96.9
R2048sA6	115.4	100.0	96.3	94.9	94.1	93.3	92.7	91.8	91.0	90.3	89.6	87.1	85.4	84.3	86.3	90.0	93.5	96.1	95.8
R2048sC6	120.7	105.4	101.3	99.3	98.8	98.4	98.0	97.4	96.5	95.8	95.1	93.1	91.9	91.0	92.6	96.1	99.9	99.6	96.8
R2304sA6	115.6	100.2	96.4	95.0	94.2	93.4	92.8	91.9	91.1	90.4	89.7	87.1	85.4	84.3	86.0	88.3	90.8	93.8	93.8
R2304sC6	120.7	105.4	101.3	99.3	98.9	98.5	98.1	97.5	96.7	95.9	95.2	93.2	92.0	91.0	92.2	93.8	96.6	99.4	96.7
R384sA7	114.9	99.2	95.3	93.7	92.6	92.1	92.3	92.4	91.8	91.0	90.4	87.9	86.2	84.8	87.3	93.1	98.1	123.1	115.4
R384sB7	120.6	104.6	100.2	98.1	97.3	96.9	97.3	98.2	97.6	96.9	96.2	94.4	93.4	92.1	93.9	98.2	102.0	129.0	121.3
R384sC7	120.6	104.6	100.2	98.1	97.3	96.9	97.3	98.2	97.6	96.9	96.2	94.4	93.4	92.1	94.8	99.7	101.5	99.8	96.9
R384sD7	131.8	104.4	99.5	97.1	95.8	95.3	96.4	100.5	107.0	114.2	121.6	138.0	138.0	138.0	138.0	138.0	138.0	138.0	138.0
R512sA7	114.9	99.4	95.6	94.0	92.9	92.1	91.6	91.0	90.9	90.8	90.4	87.9	86.2	84.8	87.3	93.1	98.1	122.9	115.4
R512sB7	120.6	104.9	100.6	98.4	97.6	96.9	96.5	96.3	96.4	96.5	96.1	94.4	93.4	92.1	93.9	98.2	102.0	129.0	121.3
R512sC7	120.6	104.9	100.6	98.4	97.6	96.9	96.5	96.3	96.4	96.5	96.1	94.4	93.4	92.1	94.8	99.7	101.5	99.8	96.9
R512sD7	132.8	105.6	100.6	98.0	96.4	95.4	94.8	94.8	95.8	98.7	103.2	131.4	138.0	138.0	138.0	138.0	138.0	138.0	138.0
R768sA7	114.9	99.5	95.9	94.5	93.4	92.6	91.9	91.0	90.3	89.8	89.3	87.9	86.1	84.8	87.3	93.1	98.0	120.5	115.3
R768sB7	120.6	105.2	101.0	98.9	98.1	97.5	96.9	96.3	95.6	95.1	94.7	94.4	93.4	92.1	93.9	98.2	102.0	128.8	121.3
R768sC7	120.6	105.2	101.0	98.9	98.1	97.5	96.9	96.3	95.6	95.1	94.7	94.4	93.4	92.1	94.8	99.7	101.5	99.8	96.9
R768sD7	134.1	107.2	102.1	99.5	97.7	96.5	95.5	94.8	94.3	93.9	93.8	102.6	120.9	138.0	138.0	138.0	138.0	138.0	138.0
R1024sA7	114.9	99.6	96.0	94.7	93.7	92.9	92.2	91.3	90.6	89.9	89.3	87.4	86.1	84.8	87.3	93.0	97.9	117.3	114.8
R1024sB7	120.6	105.3	101.2	99.1	98.5	97.9	97.3	96.7	95.9	95.3	94.7	93.5	93.4	92.1	93.9	98.2	102.0	128.3	121.3
R1024sC7	120.6	105.3	101.2	99.1	98.5	97.9	97.3	96.7	95.9	95.3	94.7	93.5	93.4	92.1	94.8	99.7	101.5	99.8	96.9
R1024sD7	135.0	108.4	103.3	100.6	98.8	97.4	96.4	95.5	94.9	94.3	93.9	93.6	102.1	115.8	130.8	138.0	138.0	138.0	138.0
R1280sA7	114.9	99.6	96.1	94.8	93.9	93.1	92.5	91.5	90.8	90.1	89.5	87.2	85.9	84.8	87.3	92.9	97.7	113.2	113.3

TD14

021t14

R1280sB7	120.6	105.3	101.2	99.2	98.7	98.1	97.7	97.1	96.2	95.5	94.9	93.2	92.8	92.1	93.9	98.2	101.9	127.0	121.2
R1280sC7	120.6	105.3	101.2	99.2	98.7	98.1	97.7	97.1	96.2	95.5	94.9	93.2	92.8	92.1	94.8	99.7	101.5	99.8	96.9
R1280sD7	135.7	109.4	104.2	101.5	99.7	98.3	97.2	96.3	95.5	94.9	94.3	92.8	94.0	101.7	112.6	124.2	136.9	138.0	138.0
R1536sA7	115.0	99.7	96.1	94.8	93.9	93.2	92.6	91.7	90.9	90.2	89.6	87.2	85.6	84.6	87.2	92.8	97.3	108.8	110.3
R1536sB7	120.6	105.3	101.3	99.3	98.8	98.3	97.9	97.3	96.5	95.7	95.1	93.2	92.4	91.8	93.9	98.2	101.9	124.9	121.0
R1536sC7	120.6	105.3	101.3	99.3	98.8	98.3	97.9	97.3	96.5	95.7	95.1	93.2	92.4	91.8	94.7	99.6	101.4	99.8	96.9
R1536sD7	136.1	110.1	105.0	102.2	100.4	99.0	97.8	96.9	96.1	95.5	94.9	92.9	92.3	94.4	101.4	110.4	119.9	138.0	138.0
R2048sA7	115.0	99.7	96.0	94.7	93.9	93.2	92.6	91.7	90.8	90.1	89.5	87.1	85.4	84.2	86.2	90.6	95.4	104.5	106.2
R2048sB7	120.6	105.3	101.2	99.2	98.8	98.3	97.9	97.3	96.5	95.7	95.1	93.1	92.0	91.0	92.2	95.8	100.4	121.1	120.2
R2048sC7	120.6	105.3	101.2	99.2	98.8	98.3	97.9	97.3	96.5	95.7	95.1	93.1	92.0	91.0	92.6	96.3	100.2	99.8	96.9
R2048sD7	136.3	110.3	105.1	102.4	100.5	99.1	98.0	97.0	96.2	95.5	94.8	92.6	91.3	90.7	91.2	94.1	99.8	128.9	138.0
R2304sA7	115.1	99.7	96.1	94.8	93.9	93.2	92.6	91.7	90.9	90.2	89.6	87.1	85.4	84.2	86.0	88.7	91.8	102.1	103.6
R2304sB7	120.6	105.3	101.2	99.2	98.8	98.4	98.0	97.5	96.6	95.9	95.2	93.2	92.0	91.0	91.8	93.7	96.9	116.6	118.9
R2304sC7	120.6	105.3	101.2	99.2	98.8	98.4	98.0	97.5	96.6	95.9	95.2	93.2	92.0	91.0	92.2	93.9	96.8	99.8	96.9
R2304sD7	136.6	110.8	105.6	102.9	101.0	99.5	98.4	97.4	96.6	95.9	95.3	92.9	91.5	90.7	90.4	91.3	94.4	118.1	138.0

TD14

021t14

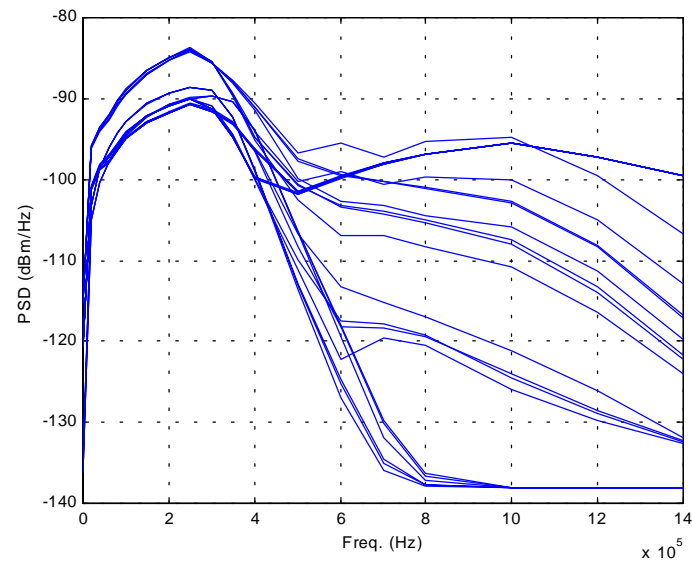
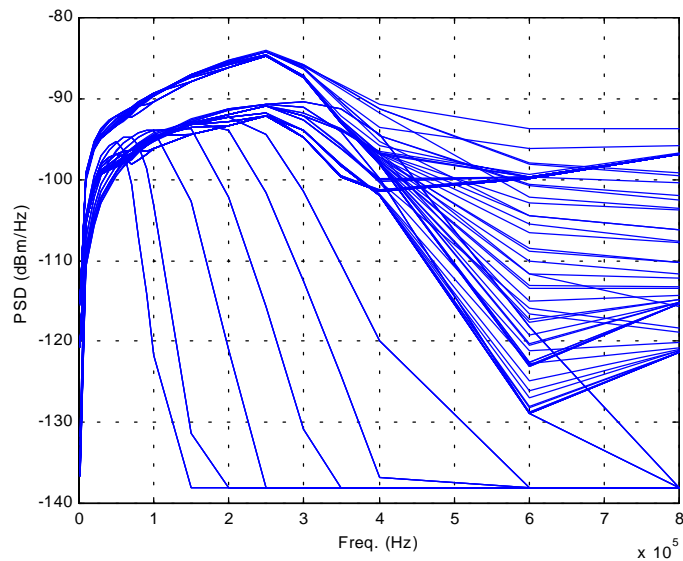
NT Side/ Asymmetric PSDs

Noise Profile	Magnitude of the noise in dBm per Hz (sign is always negative) as a function of frequency in kHz																		
	1	20	40	60	80	100	150	200	250	300	350	400	500	600	700	800	1000	1200	1400
R2048aA2	115.0	96.0	93.6	92.0	90.3	88.9	86.5	84.9	83.8	85.4	89.5	94.8	100.7	103.2	104.0	105.0	107.4	113.3	121.7
R2048aC2	120.6	101.1	98.4	97.2	95.6	94.2	92.2	91.0	90.1	91.2	94.8	99.8	101.7	99.8	98.0	96.9	95.5	97.3	99.6
R2048aD2	135.1	103.3	98.6	96.0	94.2	92.9	90.6	89.3	88.7	89.0	92.2	98.9	113.0	124.8	134.6	137.6	138.0	138.0	138.0
R2304aA2	115.0	96.1	93.9	92.6	90.8	89.4	87.0	85.3	84.1	85.6	87.9	91.2	97.7	99.6	100.2	101.0	102.6	108.2	116.8
R2304aC2	120.6	101.3	98.8	97.8	96.4	95.0	93.0	91.8	90.7	91.6	93.1	96.4	101.5	99.7	98.0	96.9	95.5	97.3	99.6
R2304aD2	136.2	105.0	100.4	97.8	95.9	94.6	92.2	90.8	89.9	89.6	90.4	93.8	106.4	118.0	129.7	136.4	138.0	138.0	138.0
R2048aD3	135.1	103.3	98.6	96.0	94.2	92.9	90.6	89.3	88.7	89.0	92.2	98.9	113.1	125.2	135.0	137.7	138.0	138.0	138.0
R2304aD3	136.2	105.0	100.3	97.7	95.9	94.5	92.2	90.8	89.9	89.6	90.4	93.8	106.4	118.2	130.1	136.6	138.0	138.0	138.0
R2048aA4	114.9	95.9	93.5	92.0	90.2	88.9	86.5	84.9	83.8	85.4	89.4	94.7	100.6	103.3	104.2	105.4	107.9	113.9	122.2
R2048aC4	120.6	101.1	98.4	97.1	95.6	94.2	92.2	91.0	90.1	91.2	94.8	99.8	101.7	99.8	98.0	96.9	95.5	97.3	99.6
R2304aA4	115.0	96.0	93.8	92.5	90.7	89.4	86.9	85.2	84.0	85.6	87.9	91.0	97.5	99.4	100.2	101.0	102.8	108.4	117.1
R2304aC4	120.6	101.2	98.7	97.8	96.4	94.9	92.9	91.7	90.7	91.6	93.1	96.4	101.5	99.7	98.0	96.9	95.5	97.3	99.6
R2048aB5	120.4	100.8	98.1	96.9	95.5	94.1	92.1	90.9	90.0	90.9	94.5	99.9	109.9	117.5	117.8	119.3	124.5	128.9	132.5
R2304aB5	120.4	100.9	98.4	97.6	96.2	94.8	92.8	91.7	90.6	91.3	92.9	96.3	106.7	113.3	115.1	116.9	121.1	126.2	131.8
R2048aA6	115.2	96.0	93.7	92.1	90.4	89.0	86.5	84.9	83.8	85.5	89.3	94.0	100.2	99.1	100.6	99.6	100.0	105.0	112.9
R2048aC6	120.6	101.1	98.4	97.2	95.6	94.3	92.2	91.0	90.1	91.2	94.7	99.6	101.7	99.7	98.0	96.8	95.5	97.3	99.6
R2304aA6	115.4	96.3	94.0	92.7	90.9	89.6	87.0	85.3	84.1	85.7	87.7	90.6	96.6	95.4	97.3	95.4	94.9	99.4	106.7
R2304aC6	120.7	101.3	98.8	97.9	96.4	95.0	93.0	91.7	90.7	91.7	93.1	96.3	101.4	99.6	98.0	96.8	95.5	97.3	99.6
R2048aA7	115.0	95.9	93.5	92.0	90.3	88.9	86.5	84.9	83.8	85.5	89.6	95.2	102.5	106.9	107.0	108.3	110.8	116.4	124.1
R2048aB7	120.6	101.1	98.4	97.1	95.6	94.2	92.2	91.0	90.1	91.0	94.5	100.1	111.2	122.3	119.5	120.5	125.9	129.7	132.6

TD14

021t14

R2048aC7	120.6	101.1	98.4	97.1	95.6	94.2	92.2	91.0	90.1	91.2	94.8	99.8	101.8	99.8	98.1	96.9	95.5	97.3	99.6
R2048aD7	135.1	103.3	98.6	96.0	94.2	92.9	90.6	89.3	88.7	89.0	92.2	98.9	113.6	127.0	135.9	137.8	138.0	138.0	138.0
R2304aA7	115.1	96.0	93.8	92.5	90.8	89.4	87.0	85.3	84.1	85.7	88.1	91.4	99.8	102.7	103.2	104.5	105.8	111.3	119.7
R2304aB7	120.6	101.2	98.7	97.8	96.4	95.0	92.9	91.7	90.7	91.4	93.0	96.5	108.3	118.2	118.3	119.4	124.0	128.5	132.3
R2304aC7	120.6	101.2	98.7	97.8	96.4	95.0	92.9	91.7	90.7	91.7	93.1	96.4	101.6	99.8	98.0	96.9	95.5	97.3	99.6
R2304aD7	136.2	105.0	100.3	97.7	95.9	94.6	92.2	90.8	89.9	89.6	90.4	93.9	106.7	119.4	131.9	137.2	138.0	138.0	138.0



Piecewise Linear Noise PSD for symmetric and asymmetric PSDs on the NT side.